

Device layout / definition of links

The symbol library provided in the standard version can naturally be modified and completed at any time.

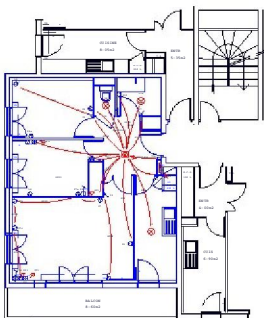
Symbols can be placed either by free hand with automatic fixing on the walls, or by dimensions (middle of the room, etc.)

The definition of links between devices specifies the minimum required data for the bill of quantities (e.g.: lights ordered for the interiors, type of partitions, circuit references,...).

D-CALC points out the deviations from standard: number of lights, outlets per circuit or power of convectors.

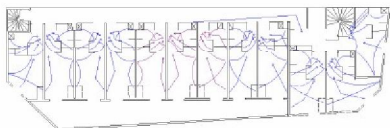
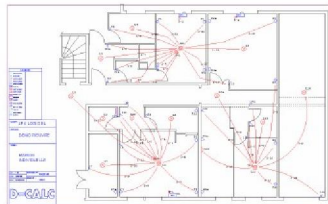
The installation design is completely unrestricted (series of outlets or lights, in bottom or top slab).

The sheath or cable runs can be straight or curved. It is enough to specify one crossing point.



Drafting features

Other Features



Draft your layouts

D-CALC has functions for quickly recopying base plans with digitizers from all formats (A4 to A0+) and all scales: polygonal shapes, dimension correction, arc etc....

A housing unit can be input in just a few minutes.

The plans entered can be resized, modified, dimensioned, duplicated or made symmetric.

D-CALC has a DXF interface (or optionally DWG) which enables receiving the plan files from other software especially AutoCAD™

You can also insert images from scanned paper plans.

D-CALC handles the most common graphical formats on the market (BMP, JPG or GIF).

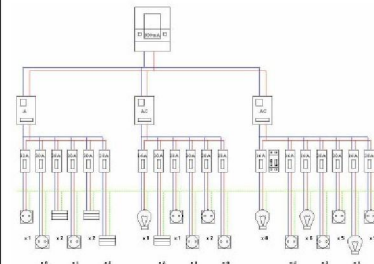
Estimates / Invoices

With **D-CALC** Layout Fabrication, save time and become more efficient. From a wiring diagram, you can create your estimates and invoices using the same software.

Single-wire board

D-CALC Layout Detailed Design enables in addition to bill of quantities calculation, the automatic viewing of the electric board of your installation by indicating the type and rating of the protections, in accordance with the size of the housing and its needs.

Designation	Quantité	Cable (mètres)	Cable (mètres HT 0)
Série de interrupteurs (interrupteur 10A)	1	0,10	0,00
Interrupteur simple bouton	1	2,10	2,10
Interrupteur 2P	1	0,00	0,00
Prise 2P+Neutre	1	4,30	4,30
Tableau 100A	1	11,00	11,00
Total Appareils HT : 00000 €			



Add-on Modules

Numerical Control (CNC)

Interface module for driving the threading machine. It enables you to thread wires into sheaths on a "Bouharmont™" type machine. It will read information (sheath type, length, section and color of the wires) from the layouts created by you in **D-CALC** Layout Fabrication

DWG Import / Export

D-CALC has an optional **DWG** module which enables you to import and export your diagrams directly from the DWG format.